



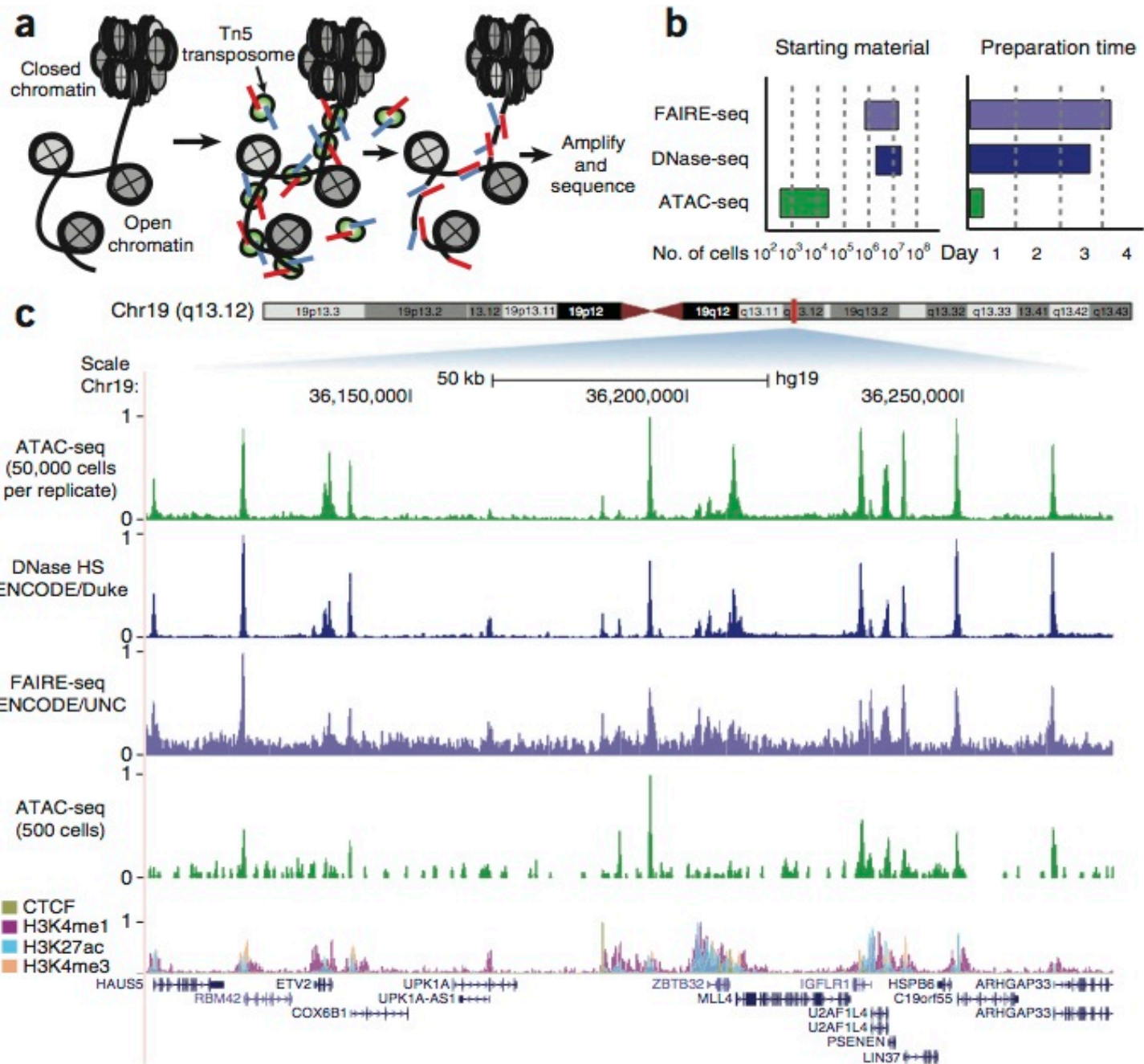
ATACseqQC for quality assessment of ATACseq dataset
NADfinder for identifying Nucleoli Associated Domain (NAD)

July 26th 2017

Lihua Julie Zhu and Jianhong Ou

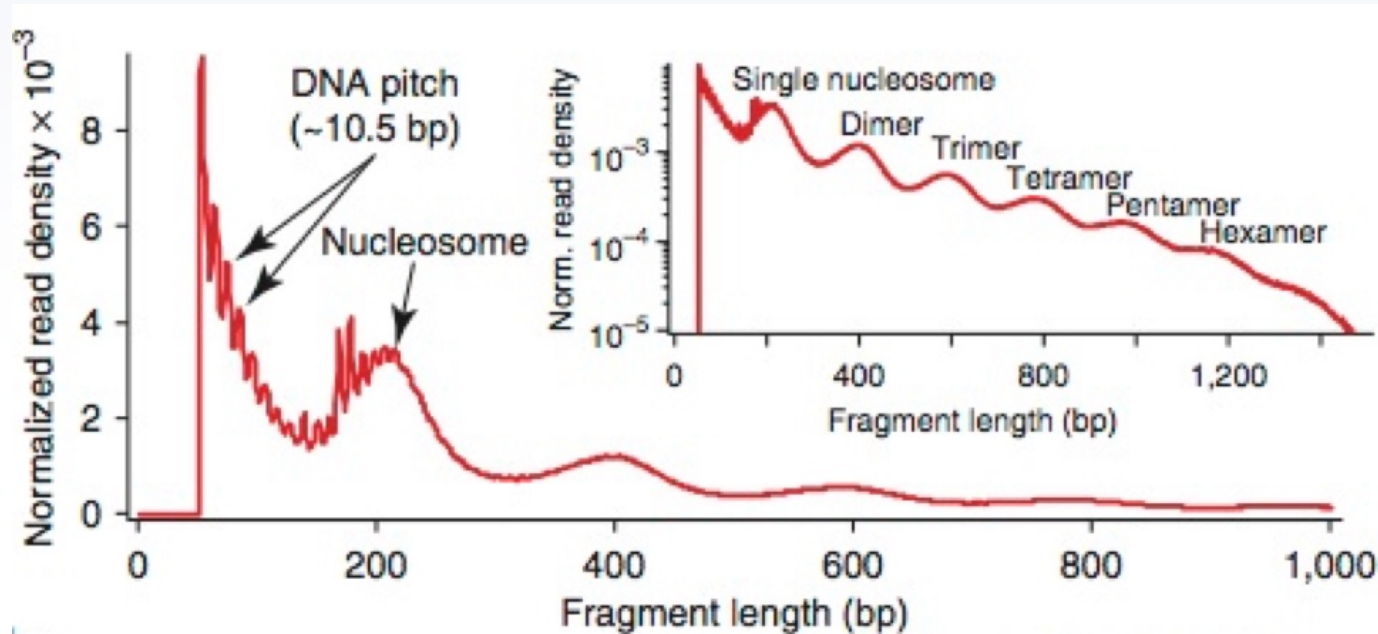
Assay for Transposase-Accessible Chromatin using Sequencing (ATAC-seq)

Adapted from
Nature Methods
 10, 1213–1218, 2013
 By Buenrostro and
 Greenleaf *et al.*



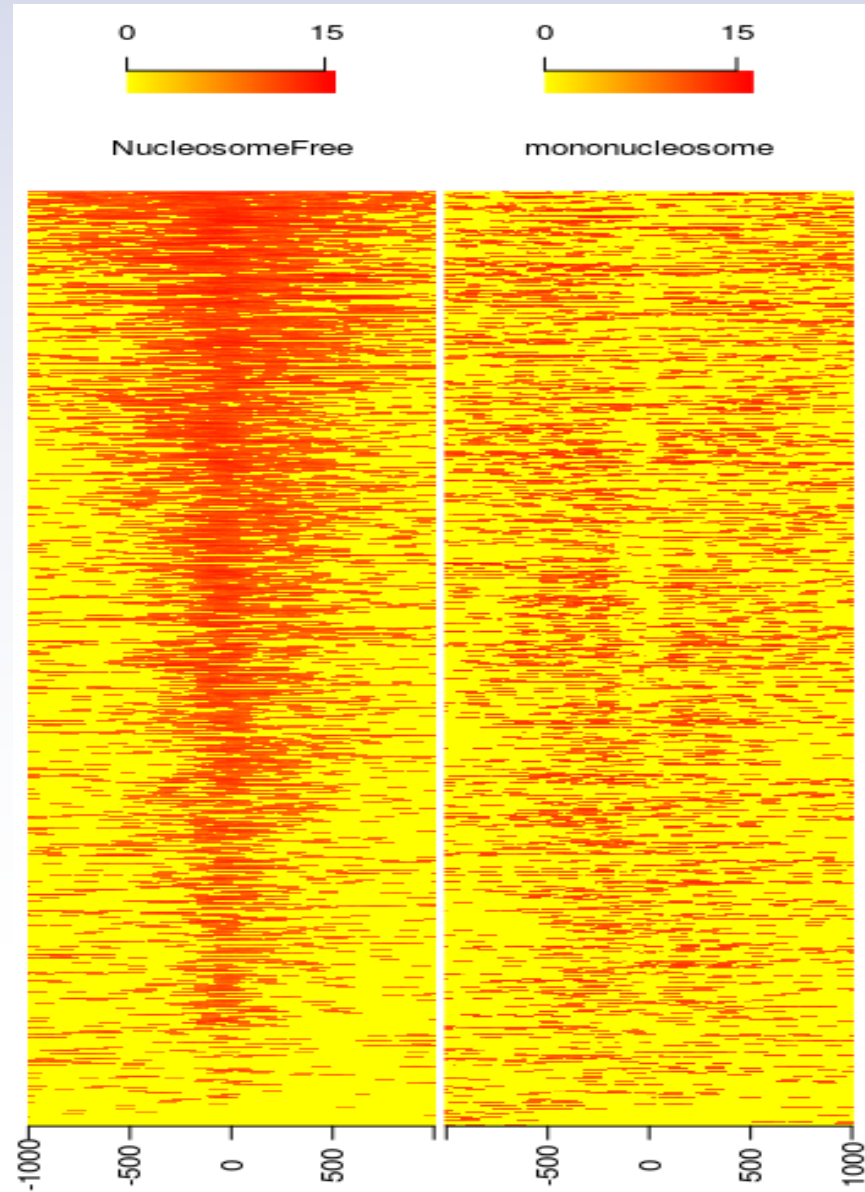
ATACseqQC Package

- Provide quick assessment of the quality of the ATAC-seq data
 - diagnostic plot of insert size distribution of sequenced fragments (periodicity)
 - proportion of mitochondria reads (< 5%)
 - genome-wide nucleosome positioning pattern at TSS
 - CTCF or other Transcript Factor footprints (depleted signals)

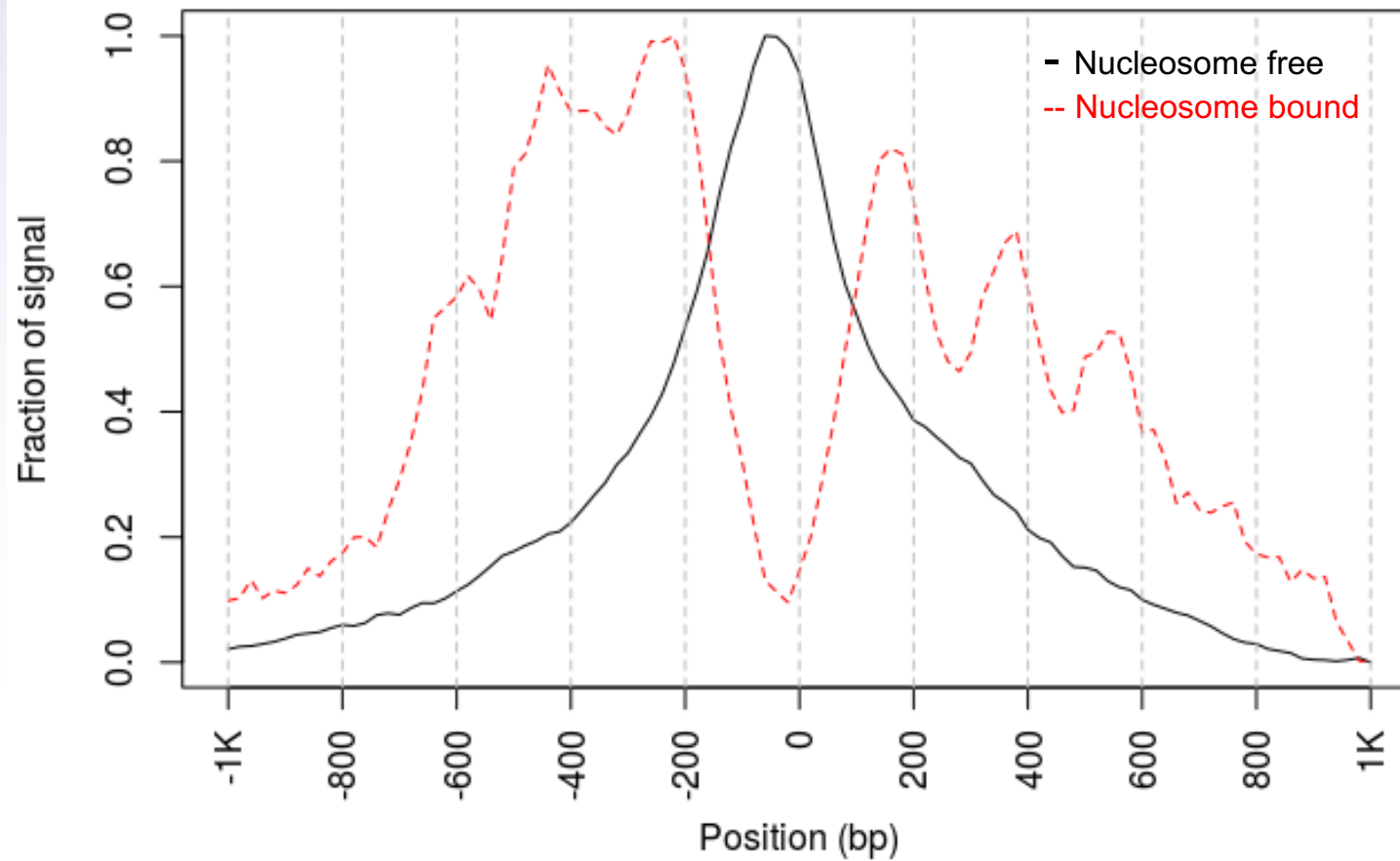


Adapted from
Nature Methods
10, 1213–1218, 2013
By Buenrostro and
Greenleaf et al.

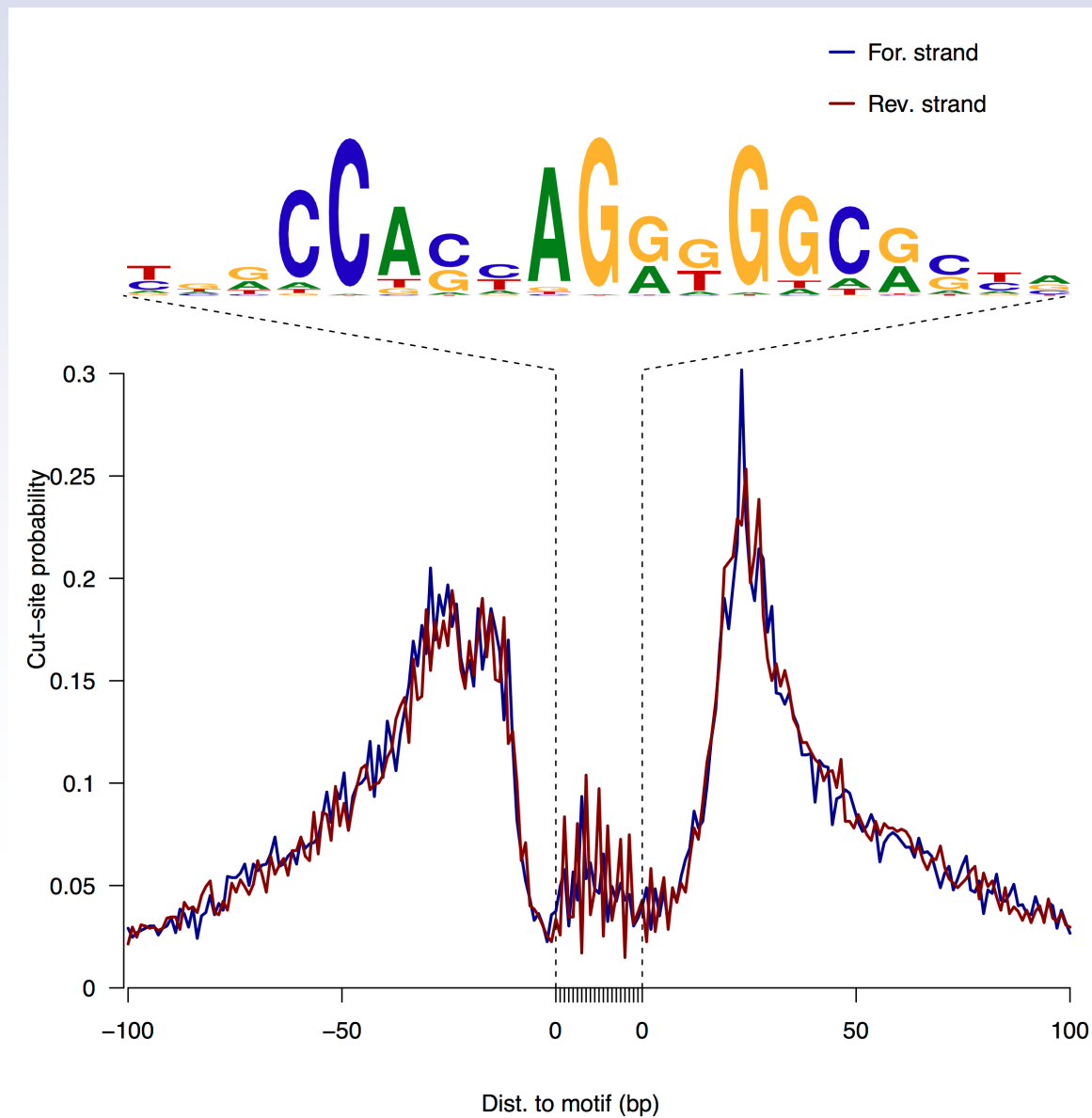
Expected patterns of nucleosome occupancy and depletion at the TSS



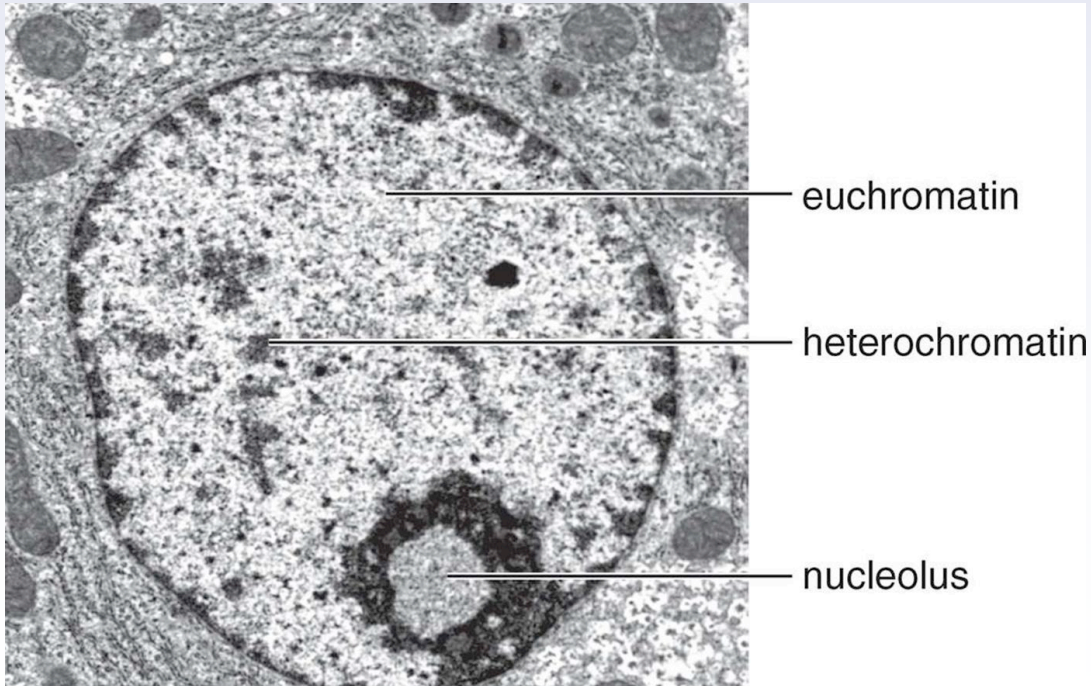
Density Plot Flanking TSS



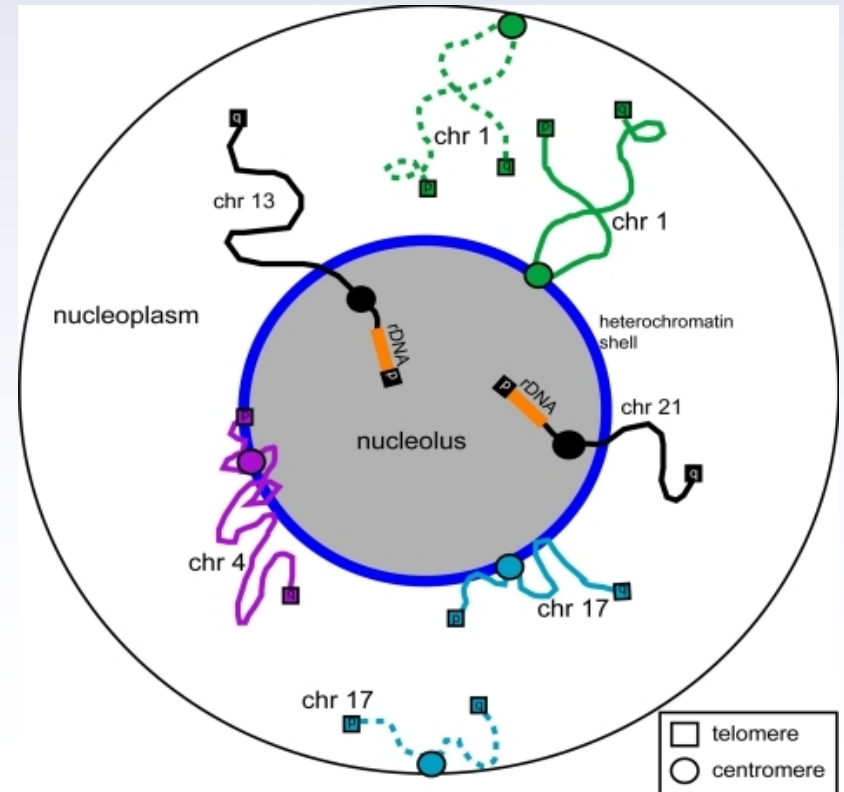
Generate footprints for DNA-binding proteins



NADFINDER
NUCLEOLI ARE THE LARGEST NUCLEAR BODIES AND
ARE SURROUNDED BY HETEROCHROMATIN

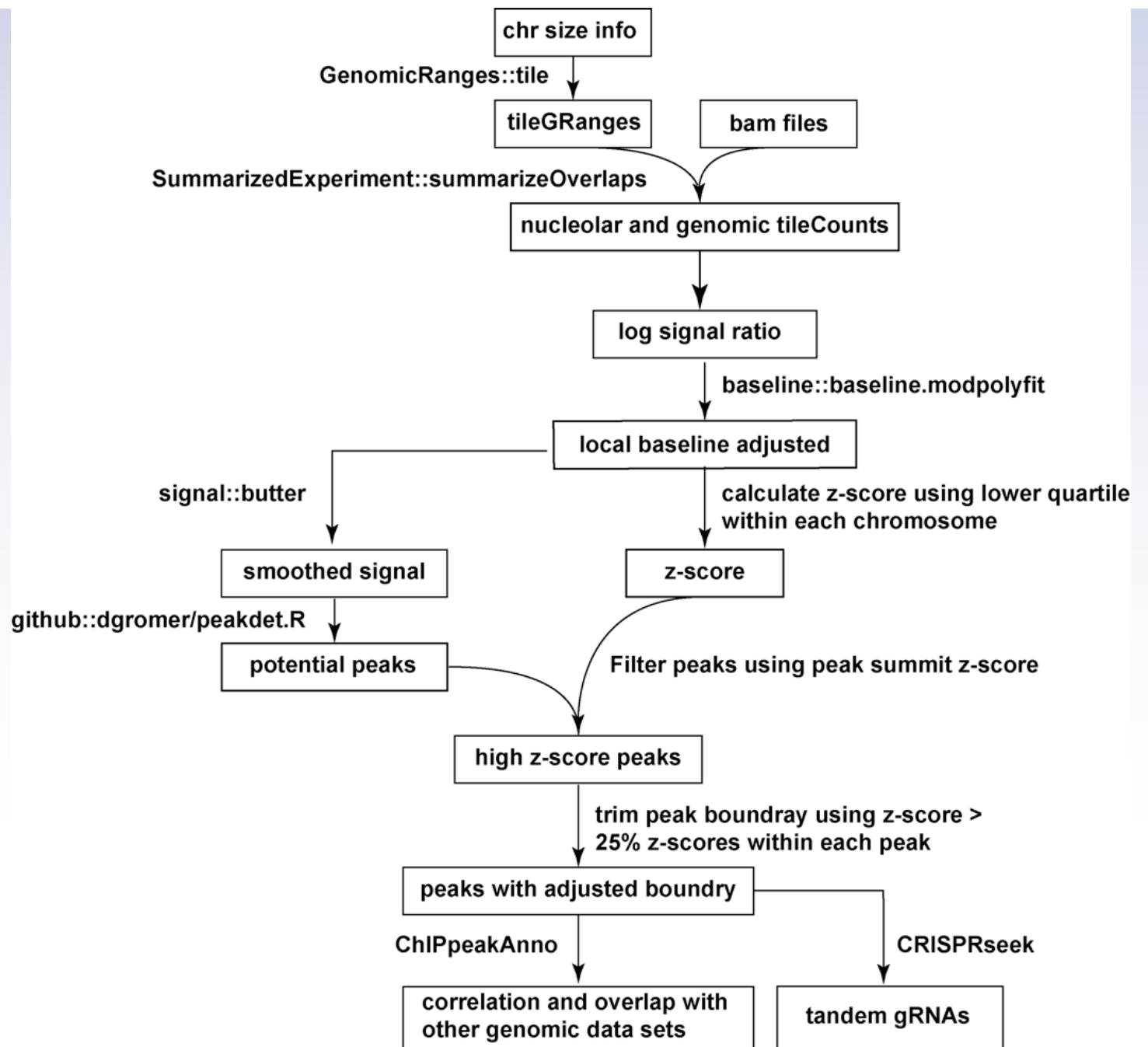


http://schoolbag.info/chemistry/mcat_biochemistry/mcat_biochemistry.files/image140.jpg



van Koningsbruggen et al... Lamond, *MBoC* 2010

NADfinder Workflow



Acknowledgement

- University of Massachusetts Medical School
 - Usha Acharya & Niraj Nirala (dagLogo)
 - Neil Aronin (CRISPRseek)
 - Michael Brodsky (CRISPRseek & MotifStack)
 - Tom Fazio and Benson Chen (REDseq)
 - Claude Gazin & Chris Hull (ChIPpeakAnno)
 - Michael Green (ChIPpeakAnno & InPAS)
 - Alper Kucukural & Manuel Garber (GUIDEseq)
 - **Nathan Lawson** (ChIPpeakAnno, ATACseqQC & cleanUpdTSeq)
 - **Jianhong Ou** (ChIPpeakAnno, dagLogo, NADfinder, ATACseqQC, GeneNetworkBuilder, MotifStack, TrackViewer, InPAS)
 - Sungmi Park (InPAS) **Lucio Castilla (ATACseqQC)**
 - Sarah Sheppard (cleanUpdTSeq) Paul Kaufman (NADfinder)
 - Heidi Tissenbaum (GeneNetworkBuilder)
 - Yongxu Wang (TrackViewer) **Michelle Kelliher (ATACseqQC)**
 - Scot Wolfe (GUIDEseq and motifStack)
 - **Jun Yu** (ChIPpeakAnno, NADfinder, ATACseqQC)
- Broad Institute of MIT and Harvard
 - Feng Zhang (CRISPRseek)
 - Benjamin Holmes
- Genentech
 - Michael Lawrence (GUIDEseq)
- The Bioconductor core members
 - Hervé Pagès (ChIPpeakAnno, CRISPRseek & GUIDEseq)
 - Martin Morgan (CRISPRseek)
 - Valerie Obenchain
 - Dan Tenenbaum
- The Bioconductor community
 - Ryan Thompson (ChIPpeakAnno)
- Nationwide Children's Hospital
 - Simon Lin (ChIPpeakAnno)
- Tufts University
 - David Lapointe (ChIPpeakAnno)